

Punches and accessories
75 WI, 75 SF, 75 WB, 75 FF, 75 WA

Article	No.	PU
Multi functional punching tool 2	298100	1 pc(s)

■ **Technical information**

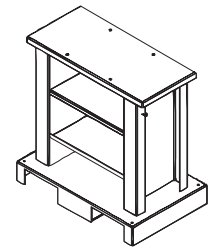
- For the processing of aluminium profiles for all THERM⁺, WING and FRAME⁺ systems.
- Automatic air vent included.
- Accessories:
 - No. 298101, 298102
 - Exchange tools on demand.



Article	No.	PU
Table for multi functional punching tool 2	298101	1 pc(s)

■ **Technical information**

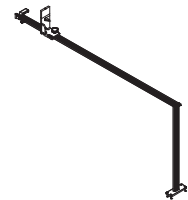
- For the safe assembly of the multifunctional punching tool 2 no. 298100.



Article	No.	PU
Length lock for pneumatic punch 2	298102	1 pc(s)

■ **Technical information**

- For multifunctional punching tool no. 298100.

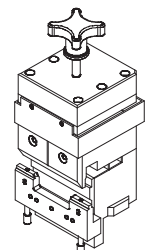


Article	No.	PU
Pneumatic punch with tool reception	298103	1 pc(s)

Article	No.	PU
Punch tool for drainage and air pressure compensation sash	298110	1 pc(s)
Counter bearing 90WI	298110.G	1 pc(s)

■ **Technical information**

- Can be used with the following profiles:
 - FRAME⁺ 75 WI: 214803, 214805, 214807, 214303, 214305, 214307.
 - FRAME⁺ 90 WI: 215341, 215342 (use counterbearing no. 298110.G).



Punches and accessories

75 WI, 75 SF, 75 WB, 75 FF, 75 WA



Article	No.	PU
Punch tool for driving rod opening sash	298120	1 pc(s)

■ **Technical information**

- Can be used with the following profiles:
- FRAME⁺ 75 WI: 214803, 214805, 214807, 214303, 214305, 214307.
- FRAME⁺ 75 SF: 214830, 214831.
- FRAME⁺ 75 FF and 75 WB: 214902, 214904, 214906, 214904, 214922, 214926.
- FRAME⁺ 75 WA: 217015, 217020, 217021.
- FRAME⁺ 90 WI: 215341, 215342.
- FRAME⁺ 90 WB: 215390, 215392.



Article	No.	PU
Punch tool for insertion gear	298121	1 pc(s)

■ **Technical information**

- Can be used with the following profiles:
- FRAME⁺ 75 WI: 214803, 214805, 214807, 214303, 214305, 214307.
- FRAME⁺ 75 SF: 214830, 214831.
- FRAME⁺ 75 FF and 75 WB: 214902, 214904.
- FRAME⁺ 90 WI: 215341, 215342.
- FRAME⁺ 90 WB: 215390, 215392.
- FRAME⁺ 90 WB-T: 215385, 215386 (use matrix no. 298127).



Article	No.	PU
Punch tool for standard handle 43 sash	298122	1 pc(s)

■ **Technical information**

- Can be used with the following profiles:
- FRAME⁺ 75 WI: 214803, 214805, 214807, 214303, 214305, 214307.
- FRAME⁺ 75 SF: 214830, 214831.
- FRAME⁺ 75 FF and 75 WB: 214902, 214904.
- FRAME⁺ 90 WI: 215341, 215342.
- FRAME⁺ 90 WB: 215390, 215392.
- FRAME⁺ 90 WB-T: 215385, 215386 (use matrix no. 298126).



Article	No.	PU
Punch tool for handle without rosette	298123	1 pc(s)

■ **Technical information**

- Can be used with the following profiles:
- FRAME⁺ 75 WI: 214803, 214805, 214807, 214303, 214305, 214307.
- FRAME⁺ 75 SF: 214830, 214831.
- FRAME⁺ 75 FF and 75 WB: 214902, 214904.
- FRAME⁺ 90 WI: 215341, 215342.
- FRAME⁺ 90 WB: 215390, 215392.

Punches and accessories
75 WI, 75 SF, 75 WB, 75 FF, 75 WA

Article	No.	PU
Punch tool for handle gear sash	298124	1 pc(s)

■ **Technical information**

- Can be used with the following profiles:
- FRAME⁺ 75 WI: 214803, 214805, 214807, 214303, 214305, 214307.
- FRAME⁺ 75 SF: 214830, 214831.
- FRAME⁺ 75 FF and 75 WB: 214902, 214904.
- FRAME⁺ 90 WI: 215341, 215342.
- FRAME⁺ 90 WB: 215390, 215392.



Article	No.	PU
Punch tool for driving rod	298125	1 pc(s)
Stop jig for punch tool 298125	298128	1 pc(s)

■ **Technical information**

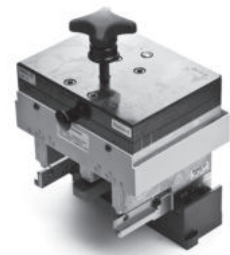
- Can be used with the following profiles:
- FRAME⁺ 75 WI, 75 FF and 75 WB: 225530.
- FRAME⁺ 75 WI: 225540.
- Stop jig no. 298128 for punch tool no. 298125 to perforate the driving rods.



Article	No.	PU
Punch tool for nail and glue holes sash	298141	1 pc(s)

■ **Technical information**

- Can be used with the following profiles:
- Corner connections FRAME⁺ 75 WI: 214805, 214807, 214812.



Article	No.	PU
Adaptor tool for nail and glue holes sash	298143	1 pc(s)

■ **Technical information**

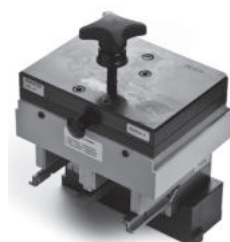
- Can be used with the following profiles:
- Corner connections FRAME⁺ 75 WI: 214803, 214810.



Article	No.	PU
Adaptor tool for nail and glue holes	298148	1 pc(s)

■ **Technical information**

- Can be used with the following profiles:
- Corner connections FRAME⁺ 75 WB: 207666, 207667, 207668, 207670.



Punches and accessories

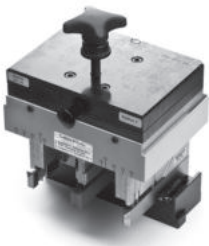
75 WI, 75 SF, 75 WB, 75 FF, 75 WA



Article	No.	PU
Adaptor tool for nail and glue holes outer frame and mullion/transom	298150	1 pc(s)

■ **Technical information**

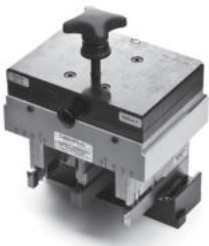
- Can be used with the following profiles:
- Corner and T-connections FRAME⁺ 75 WI: 214504, 214506, 214508, 214512, 214519, 214520, 214530, 214552, 214554, 214556, 214558, 214562, 214568, 214570, 214572, 214576, 214644, 214646.
- Corner and T-connections FRAME⁺ 75 FF: 210506, 210510, 210796, 210800, 210806, 210815, 214622, 214626, 214640.
- Corner connections FRAME⁺ 75 WB: 207504, 207506, 207556, 207562, 207568, 207604, 207606.
- Corner and T-connections FRAME⁺ 90 WI: 215301, 215302, 215303, 215304, 215305, 215306, 215311, 215312, 215313, 215314, 215315, 215316.
- Corner connections FRAME⁺ 90 WB: 215352.



Article	No.	PU
Adaptor tool for nail and glue holes integration outer frame	298153	1 pc(s)

■ **Technical information**

- Can be used with the following profiles:
- Corner connections FRAME⁺ 75 WI: 214666, 214670.
- Corner connections FRAME⁺ 90 WI: 215330.
- Corner connections FRAME⁺ 90 WB: 215380.



Article	No.	PU
Adaptor tool for drainage outer frame	298155	1 pc(s)

■ **Technical information**

- For visible drainage of outer frame/mullion.
- Can be used with the following profiles:
- FRAME⁺ 75 WI: 214012, 214054, 214056, 214058, 214504, 214506, 214508, 214512, 214519, 214520, 214530, 214554, 214556, 214558, 214562, 214568, 214570, 214572, 214576, 214692, 214694, 214702.
- FRAME⁺ 75 FF: 210796, 210800, 210806, 210815, 210506, 210700, 210701.
- FRAME⁺ 75 WB: 207504, 207506, 207556, 207562, 207568, 207604, 207606, 207670.
- FRAME⁺ 90 WI: 215301, 215302, 215303, 215304, 215305, 215306, 215311, 215312, 215313, 215314, 215315, 215316 215330.



Article	No.	PU
Adaptor tool for drainage outer frame	298156	1 pc(s)

■ **Technical information**

- For concealed drainage of outer frame/mullion.
- Can be used with the following profiles:
- FRAME⁺ 75 WI: 214012, 214054, 214056, 214058, 214504, 214506, 214508, 214512, 214552, 214554, 214556, 214558, 214562, 214644, 214646.
- FRAME⁺ 75 FF: 210796, 210800, 210806, 210815, 210506.
- FRAME⁺ 75 WB: 207504, 207506, 207556, 207562.
- FRAME⁺ 90 WI: 215301, 215302, 215303, 215304, 215305, 215311, 215312, 215313, 215314, 215315, 215330.
- FRAME⁺ 90 WB: 215352.

Punches and accessories
75 WI, 75 SF, 75 WB, 75 FF, 75 WA

Article	No.	PU
Punch tool driving rod opening	298026	1 pc(s)

■ **Technical information**

- Can be used with the following profiles:
- FRAME⁺ 75 WI: 214803, 214805, 214807, 214303, 214305, 214307.
- FRAME⁺ 75 SF: 214830, 214831.
- FRAME⁺ 75 FF and 75 WB: 214902, 214904, 214906, 214904.
- FRAME⁺ 90 WI: 215341, 215342.
- FRAME⁺ 90 WB: 215390, 215392.



Punches and accessories

75 WI, 75 SF, 75 WB, 75 FF, 75 WA



Article	No.	PU
Pneumatic hand punch 2	298200	1 pc(s)

■ **Technical information**

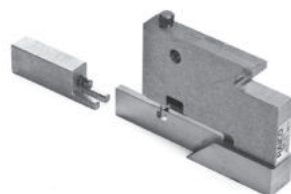
- For processing of the aluminium profiles in FRAME⁺ and WING window and door systems.
- Accessories:
 - Punching tool acc. to application.



Article	No.	PU
Punch tool for nail and glue holes outer frame and mullion/transom	298210	1 pc(s)

■ **Technical information**

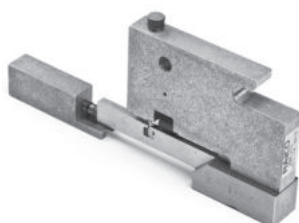
- Can be used with the following profiles:
- Corner and T-connections FRAME⁺ 75 WI: 214504, 214506, 214508, 214512, 214519, 214520, 214530, 214522, 214526, 214554, 214556, 214558, 214562, 214568, 214570, 214572, 214576, 214606, 214004, 214006, 214008, 214012, 214054, 214056, 214058.
- Corner connections FRAME⁺ 75 FF: 210800, 210806, 210815, 214626.
- Corner connections FRAME⁺ 75 WB: 207504, 207506, 214626.
- Corner connections FRAME⁺ 75 DI: 314000, 314008, 314050, 314060.
- Corner and T-connections FRAME⁺ 90 WI: 215301, 215302, 215303, 215304, 215305, 215306, 215311, 215312, 215313, 215314, 215315, 215316, 215336.
- Corner connections FRAME⁺ 90 WB: 215352.



Article	No.	PU
Punch tool for nail and glue holes sash	298211	1 pc(s)

■ **Technical information**

- Can be used with the following profiles:
- Corner connections FRAME⁺ 75 WI: 214805, 214807, 214812, 214305, 214307.
- Corner connections FRAME⁺ 75 SF: 214830, 214831.
- Corner connections FRAME⁺ 90 WI: 215342.
- Corner connections FRAME⁺ 90 WB (inner shell): 215390, 215392.



Article	No.	PU
Adaptor insert for nail and glue holes sash	298213	1 pc(s)

■ **Technical information**

- Can be used with the following profiles:
- Corner connections FRAME⁺ 75 WI: 214803, 214303.
- Corner connections FRAME⁺ 90 WI: 215341.



Article	No.	PU
Punch tool for nail and glue holes outer frame and mullion/transom	298214	1 pc(s)

■ **Technical information**

- Can be used with the following profiles:
- T-connections FRAME⁺ 75 WB: 207504, 207506, 207556, 207562, 207568, 214626.

Punches and accessories
75 WI, 75 SF, 75 WB, 75 FF, 75 WA

Article	No.	PU
Punch tool for nail and glue holes outer frame and mullion/transom	298215	1 pc(s)

■ **Technical information**

- Can be used with the following profiles:
- T-connections FRAME⁺ 75 WB: 207604, 214622.



Article	No.	PU
Punch tool for glue holes outer frame and mullion/transom	298216	1 pc(s)

■ **Technical information**

- Can be used with the following profiles:
- Corner connections FRAME⁺ 75 WI: 214504, 214506, 214508, 214512, 214519, 214520, 214530, 214522, 214526, 214554, 214556, 214558, 214562, 214568, 214570, 214572, 214576, 214004, 214006, 214008, 214012, 214054, 214056, 214058.
- Corner connections FRAME⁺ 75 FF: 210800, 210806, 214622, 214626.
- Corner connections FRAME⁺ 75 WB: 207504, 207506, 214622, 214626.



Article	No.	PU
Punch tool for nail & glue holes sash	298217	1 pc(s)

■ **Technical information**

- Can be used with the following profiles:
- Corner connections FRAME⁺ 75 WI: 214803, 214805, 214807, 214812, 214303, 214305, 214307.



Article	No.	PU
Punch tool for nail and glue holes expansion profiles	298218	1 pc(s)

■ **Technical information**

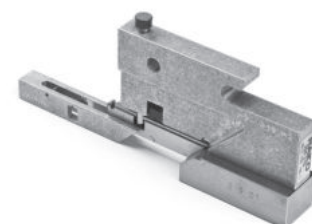
- Can be used with the following profiles:
- Corner connections FRAME⁺ 75 WI: 214606.
- Corner connections FRAME⁺ 75 WB: 207606.
- Corner connections FRAME⁺ 90 WI: 215328.



Article	No.	PU
Adaptor tool for nail and glue holes	298219	1 pc(s)

■ **Technical information**

- Can be used with the following profiles:
- Corner connections FRAME⁺ 75 WI: 214666.
- Corner connections FRAME⁺ 75 WB: 207666, 207667, 207668.
- Corner connections FRAME⁺ 90 WB: 215380.



Punches and accessories

75 WI, 75 SF, 75 WB, 75 FF, 75 WA



Article	No.	PU
Adaptor insert free punching lock bar groove	298221	1 pc(s)

■ **Technical information**

- Can be used with the following profiles:
- FRAME⁺ 75 WI: 214803, 214805, 214807, 214303, 214305, 214307.
- FRAME⁺ 75 SF: 214830, 214831.
- FRAME⁺ 75 FF and 75 WB: 214902, 214904, 214906, 214904, 214922, 214926.
- FRAME⁺ 75 WA: 217015, 217020, 217021.
- FRAME⁺ 90 WI: 215341, 215342.
- FRAME⁺ 90 WB: 215390, 215392.



Article	No.	PU
Adaptor insert boring lock bar 10	298222	1 pc(s)

■ **Technical information**

- Can be used with the following profiles:
- FRAME⁺ 75 WI, 75 FF and 75 WB: 225530.



Article	No.	PU
Adaptor insert boring driving rod 6	298223	1 pc(s)

■ **Technical information**

- Can be used with the following profiles:
- FRAME⁺ 75 WI, 75 FF and 75 WB: 225540.
- FRAME⁺ 90 WI, 90 WB, 90 WB-T: 225540.



Article	No.	PU
Interchangeable insert open-end punching	298228	1 pc(s)

■ **Technical information**

- For FRAME⁺ 75 WI, 90 WI, 90 WB.
- Can be used for all outer frame and mullion/transom-profiles.



Article	No.	PU
Block extension set 298210	298280	1 pc(s)

■ **Technical information**

- Can be used with the following profiles:
- FRAME⁺ 75 FF: 218730.

Punches and accessories
75 WI, 75 SF, 75 WB, 75 FF, 75 WA

Article	No.	PU
Punch tool for glass carrier holes	298301	1 pc(s)

■ **Technical information**

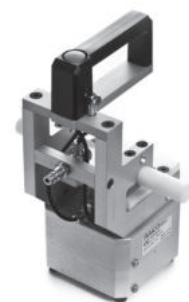
- For pneumatic hand punch no. 298200.
- FRAME⁺ 75 FF: Processing of connection profile no. 218700.
- WING 50 SK/50 A: Processing of glazing profiles no. 218084, 218094.



Article	No.	PU
Pneumatic hand punch for drainage outer frame and Mullion/Transom	298310	1 pc(s)

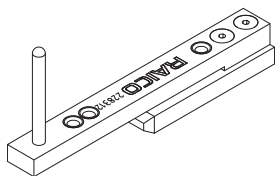
■ **Technical information**

- Can be used with the following profiles:
- FRAME⁺ 75 WI: 214504, 214506, 214508, 214512, 214519, 214520, 214530, 214554, 214556, 214558, 214562, 214568, 214570, 214572, 214576, 214004, 214006, 214008, 214012, 214054, 214056, 214058.
- FRAME⁺ 75 FF: 210506, 210700, 210800, 210806.
- FRAME⁺ 75 WB: 207504, 207506, 207556, 207562, 207568, 207604, 207606.
- Suitable for subsequent drainage punches.



Drill jigs

75 WI, 75 SF, 75 WB, 75 FF, 75 WA



Article	No.	PU
Drill jig nail and glue holes interior shell of casement sash	228312	1 pc(s)

■ **Technical information**

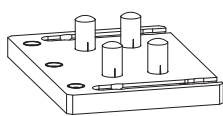
- Can be used with the following profiles:
- FRAME⁺ 75 FF: 214906, 214908, 214926, 214928.
- FRAME⁺ 75 WB: 214906, 214908, 214926, 214928.



Article	No.	PU
75 B drilling jig for corner angle	228315	1 pc(s)

■ **Technical information**

- Can be used with the following profiles:
- FRAME⁺ 75 FF: 214902, 214904, 214906, 214908, 214922, 214924, 214926, 214928.
- FRAME⁺ 75 WB: 214902, 214904, 214906, 214908, 214922, 214924, 214926, 214928.



Article	No.	PU
Drilling/assembly jig for reinforcement set stay/corner bearing 130/160 kg	228339	1 pc(s)

■ **Technical information**

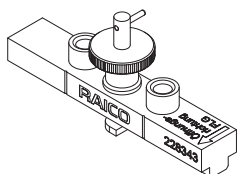
- Can be used with the following profiles:
- FRAME⁺ 75 WI: 214004, 214006, 214008, 214012, 214054, 214056, 214058, 214504, 214506, 214508, 214512, 214519, 214520, 214530, 214554, 214556, 214558, 214562, 214568, 214570, 214572, 214576, 214602, 214606, 214644, 214646, 214716, 214718, 214900.
- FRAME⁺ 75 FF: 210506, 210510, 210721, 210726, 210700, 210740, 210800, 210800.
- FRAME⁺ 75 WB: 207504, 207506, 207556, 207562, 207568, 207604, 207606, 207666, 207667, 207670.
- FRAME⁺ 90 WI: 215301, 215302, 215303, 215304, 215305, 215306, 215311, 215312, 215313, 215314, 215315, 215316, 215322, 215324, 215328, 215330.
- FRAME⁺ 90 WB: 215352, 215380.



Article	No.	PU
Drill jig for turn lock and gear handle	228342	1 pc(s)

■ **Technical information**

- Can be used with the following profiles:
- FRAME⁺ 75 WI: 214303, 214305, 214307, 214803, 214805, 214807.
- FRAME⁺ 75 WB and 75 FF: 214902, 214904, 214906, 214908.
- FRAME⁺ 90 WI: 215341, 215342.
- FRAME⁺ 90 WB: 215390, 215392.



Article	No.	PU
Drill jig for RC driving pin	228343	1 pc(s)

■ **Technical information**

- Drill jig for SEC locking set WK2/RC2 no. 293050.

Drill jigs

75 WI, 75 SF, 75 WB, 75 FF, 75 WA

Article	No.	PU
Assembly jig for additional friction stay and wedge	228345	1 pc(s)



■ **Technical information**

- Can be used with the following profiles:
- FRAME⁺ 75 WI: 214803, 214805, 214807, 214303, 214305, 214307.
- FRAME⁺ 75 WB and 75 FF: 214902, 214904, 214906, 214908.
- FRAME⁺ 90 WI: 215341, 215342.
- FRAME⁺ 90 WB: 215390, 215392.

Article	No.	PU
Drill jig for driving rod	228346	1 pc(s)



■ **Technical information**

- Can be used with the following profiles:
- FRAME⁺ 75 WI, 75 FF, 75 WB, 90 WI and 90 WB: 225530

Article	No.	PU
Drill jig for gear and standard handle	228347	1 pc(s)



■ **Technical information**

- Can be used with the following profiles:
- FRAME⁺ 75 WI: 214303, 214305, 214307, 214803, 214805, 214807.
- FRAME⁺ 75 WB and 75 FF: 214902, 214904, 214906, 214908.
- FRAME⁺ 90 WI: 215341, 215342.
- FRAME⁺ 90 WB: 215390, 215392.
- FRAME⁺ 90 WB-T: 215385, 215386.

Article	No.	PU
Drill jig for mortice bolt and handle without rosette	228348	1 pc(s)



■ **Technical information**

- Can be used with the following profiles:
- FRAME⁺ 75 WI: 214303, 214305, 214307, 214803, 214805, 214807.
- FRAME⁺ 75 WB and 75 FF: 214902, 214904, 214906, 214908.
- FRAME⁺ 90 WI: 215341, 215342.
- FRAME⁺ 90 WB: 215390, 215392.

Article	No.	PU
Drill jig for opening limiter	228349	1 pc(s)

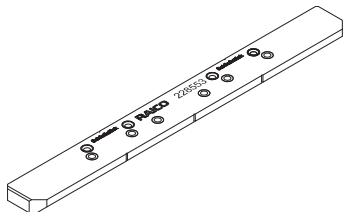


■ **Technical information**

- Can be used with the following profiles:
- FRAME⁺ 75 WI: 214803, 214805, 214807, 214303, 214305, 214307.
- FRAME⁺ 75 WB and 75 FF: 214902, 214904, 214906, 214908.
- FRAME⁺ 90 WI: 215341, 215342.
- FRAME⁺ 90 WB: 215390, 215392.

Drill jigs

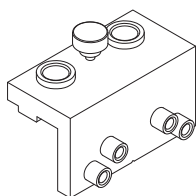
75 WI, 75 SF, 75 WB, 75 FF, 75 WA



Article	No.	PU
Drill jig	228553	1 pc(s)

■ **Technical information**

- Can be used with the following profiles:
- FRAME⁺ 75 WA: 217011, 217013.



Article	No.	PU
Drill jig	228554	1 pc(s)

■ **Technical information**

- Can be used with the following profiles:
- FRAME⁺ 75 WA: 217015, 217020, 217021.



Article	No.	PU
Drill jig for corner connector integration outer frame	228555	1 pc(s)

■ **Technical information**

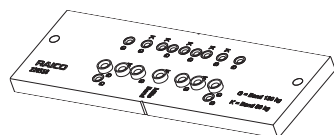
- Can be used with the following profiles:
- FRAME⁺ 75 WA: 217010, 217011, 217012, 217013.



Article	No.	PU
Drill jig for corner connector sash	228556	1 pc(s)

■ **Technical information**

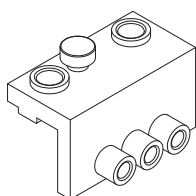
- Can be used with the following profiles:
- FRAME⁺ 75 WA: 217015, 217020, 217021.



Article	No.	PU
Drill jig hinge	228558	1 pc(s)

■ **Technical information**

- Can be used with the following profiles:
- FRAME⁺ 75 WA: 217010, 217011, 217012, 217013, 217015, 217020, 217021.



Article	No.	PU
Drill jig	228559	1 pc(s)

■ **Technical information**

- Can be used with the following profiles:
- FRAME⁺ 75 WA: 217015, 217020, 217021.

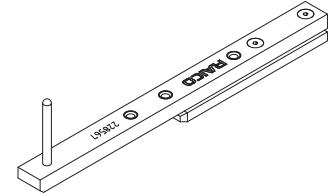
Drill jigs

75 WI, 75 SF, 75 WB, 75 FF, 75 WA

Article	No.	PU
Drill jig for nail and glue holes reversion profile inner shell	228567	1 pc(s)

■ Technical information

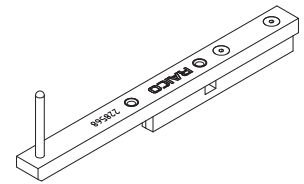
- Can be used with the following profiles:
- FRAME+ 75 WA: 217035, 217036 (inner shells).



Article	No.	PU
Drill jig for nail and glue holes reversion profile outer shell	228568	1 pc(s)

■ Technical information

- Can be used with the following profiles:
- FRAME+ 75 WA: 217035, 217036 (outer shells).



Article	No.	PU
Drill jig for set of friction stays SK3 and SK4	228573	1 pc(s)
Drill jig for set of friction stays SK5	228575	1 pc(s)
Drill jig for set of friction stays SK6	228576	1 pc(s)
Drill jig for set of friction stays SK7	228577	1 pc(s)

■ Technical information

- Can be used with the following profiles:
- FRAME+ 75 WA: 217015, 217020, 217021.



Article	No.	PU
Drill jig for set of friction stays SK3 and SK4	228583	1 pc(s)
Drill jig for set of friction stays SK5	228585	1 pc(s)
Drill jig for set of friction stays SK6	228586	1 pc(s)
Drill jig for set of friction stays SK7	228587	1 pc(s)

■ Technical information

- Can be used with the following profiles:
- FRAME+ 75 WA: 217010, 217011, 217012, 217013.
- for WING 50 SK/A and FRAME+ 75 WA in the outer frame.



Article	No.	PU
Drill jig	228601	1 pc(s)

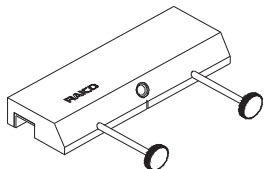
■ Technical information

- Can be used with the following profiles:
- FRAME+ 75 FF: 210506, 210800, 210806.



Drill jigs

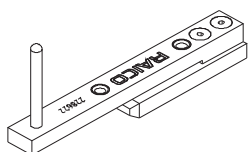
75 WI, 75 SF, 75 WB, 75 FF, 75 WA



Article	No.	PU
Drill jig	228602	1 pc(s)

■ Technical information

- Can be used with the following profiles:
- FRAME⁺ 75 FF: 210510, 210622, 210624, 210721, 210726, 210740.



Article	No.	PU
Drill jig for nail and glue holes sash	228622	1 pc(s)

■ Technical information

- Can be used with the following profiles:
- FRAME⁺ 75 SF: 214830, 214831.
- FRAME⁺ 75 FF and 75 WB: 214902, 214904, 214922, 214924.
- FRAME⁺ 90 WI (inner shell): 215341, 215342.
- FRAME⁺ 90 WB (inner shell): 215390, 215392.
- FRAME⁺ 90 WB-T: 215385, 215386.



Article	No.	PU
Drill jig	228721	1 pc(s)

■ Technical information

- Can be used with the following profiles:
- Corner and T-connections FRAME⁺ 75 WI: 214504, 214506, 214508, 214512, 214519, 214520, 214530, 214522, 214626, 214554, 214556, 214558, 214562, 214568, 214570, 214572, 214576, 214606, 214692, 214694, 214702, 214004, 214006, 214008, 214012, 214054, 214056, 214058.
- Corner and T-connections FRAME⁺ 75 FF: 210796, 210800, 210806, 210506, 210510, 210701, 210721, 214622, 214626, 210815.
- Corner and T-connections FRAME⁺ 75 WB: 207504, 207506, 214622, 214626, 207556, 207562, 207568.
- Corner and T-connections FRAME⁺ 75 DI: 214520, 214530, 314000, 314004, 314008, 314014, 314024, 314206, 314207, 314208, 314050, 314060.



Article	No.	PU
Drill jig	228722	1 pc(s)

■ Technical information

- Can be used with the following profiles:
- Corner connections FRAME⁺ 75 WI : 214803, 214805, 214807, 214812, 214303, 214305, 214307, 214312.

Drill jigs

75 WI, 75 SF, 75 WB, 75 FF, 75 WA

Article	No.	PU
Drill jig	228723	1 pc(s)

■ Technical information

- Can be used with the following profiles:
- Corner and T-Connections FRAME⁺ 75 WI: 214644, 214646, 214144, 214146.



Article	No.	PU
Drill jig	228724	1 pc(s)

■ Technical information

- Can be used with the following profiles:
- Corner and T-connections FRAME⁺ 75 WI: 214606.
- Corner and T-connections FRAME⁺ 75 FF: 210721.
- Corner and T-connections FRAME⁺ 75 WB: 207604, 207606.



Article	No.	PU
Drill jig	228725	1 pc(s)

■ Technical information

- Can be used with the following profiles:
- T-connections FRAME⁺ 75 WI: 214818.



Article	No.	PU
Drill jig	228726	1 pc(s)

■ Technical information

- Can be used with the following profiles:
- T-connections FRAME⁺ 75 FF: 214876, 214902, 214904.
- T-connections FRAME⁺ 75 WB: 214876, 214902, 214904.



Article	No.	PU
Drill jig	228727	1 pc(s)

■ Technical information

- Can be used with the following profiles:
- Corner connections FRAME⁺ 75 WI: 214900.



Article	No.	PU
Drill jig	228728	1 pc(s)

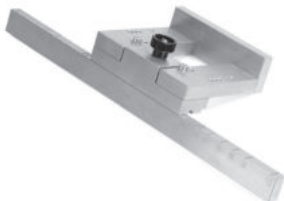
■ Technical information

- Can be used with the following profiles:
- Corner connections FRAME⁺ 75 WI: 214666, 214670.
- Corner connections FRAME⁺ 75 WB: 207666, 207667, 207668, 207670.
- Corner and T-connections FRAME⁺ 75 DI: 314002, 314006, 314010, 314012.



Drill jigs

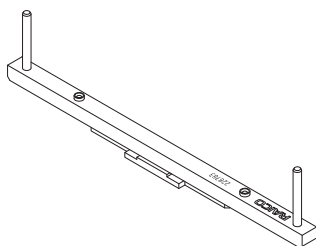
75 WI, 75 SF, 75 WB, 75 FF, 75 WA



Article	No.	PU
Assembly jig for T-connector	228729	1 pc(s)

■ **Technical information**

- Can be used with the following profiles:
- T-connections FRAME⁺ 75 WI: 214504, 214506, 214508, 214512, 214519, 214520, 214530, 214522, 214626, 214554, 214556, 214558, 214562, 214568, 214570, 214572, 214576, 214602, 214606, 214644, 214646, 214672, 214692, 214694, 214702, 214716, 214718, 214803, 214805, 214807, 214812, 214816, 214004, 214006, 214008, 214012, 214054, 214056, 214058.
- T-connections FRAME⁺ 75 FF: 210800, 210806, 210506, 210510, 210622, 210624, 210700, 210721, 210726, 210740, 214622, 214626.
- T-connections FRAME⁺ 75 WB: 207504, 207506, 214622, 214626, 207604, 207606, 207556, 207562, 207568.
- T-connections FRAME⁺ 75 DI: 214818, 214822, 214828, 314200, 314210.



Article	No.	PU
Drill jig corner angle sash outer shell	228783	1 pc(s)

■ **Technical information**

- For nail holes in outer shell of FRAME⁺ 75 SF sash.



Article	No.	PU
Drill jig for bearing 200 kg	228785	1 pc(s)

■ **Technical information**

- Can be used with the following profiles:
- FRAME⁺ 75 SF: 214830, 214831.
- FRAME⁺ 75 WI: 214803, 214805, 214807, 214303, 214305, 214307.
- FRAME⁺ 75 FF: 214902, 214904, 214906, 214908.
- FRAME⁺ 75 WB: 214902, 214904, 214906, 214908.
- FRAME⁺ 90 WI: 215341, 215342.
- FRAME⁺ 90 WB: 215390, 215392.



Article	No.	PU
Drill jig for DF hinge 300 kg	228786	1 pc(s)

■ **Technical information**

- Can be used with the following profiles:
- FRAME⁺ 75 WI: 214504, 214506, 214508, 214512, 214519, 214520, 214530, 214554, 214556, 214558, 214562, 214568, 214570, 214572, 214576, 214692, 214694, 214702, 214803, 214805, 214807, 214004, 214006, 214008, 214012, 214054, 214056, 214058.
- FRAME⁺ 75 FF: 210800, 210806, 214506, 214700, 214902, 214904, 214906, 214908.
- FRAME⁺ 75 WB: 207504, 207506, 207556, 207562, 207568, 207604, 207606, 214902, 214904, 214906, 214908.
- FRAME⁺ 90 WI: 215301, 215302, 215303, 215304, 215305, 215306, 215311, 215312, 215313, 215314, 215315, 215316, 215322, 215328, 215330, 215336, 215341, 215342.
- FRAME⁺ 90 WB: 215352, 215380, 215390, 215392.

Drill jigs

75 WI, 75 SF, 75 WB, 75 FF, 75 WA

Article	No.	PU
Drill jig integration outer frame ventilation flap	228787	1 pc(s)



■ **Technical information**

- Can be used with the following profiles:
- Corner connections 75 LF: 210450.

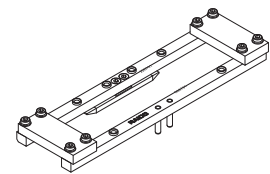
Article	No.	PU
Drilling template	228788	1 pc(s)



■ **Technical information**

- Can be used with the following profiles:
- T-connections FRAME⁺ 75 WI: 214818.
- T-connections FRAME⁺ 75 DI: 214818, 214822, 214828.

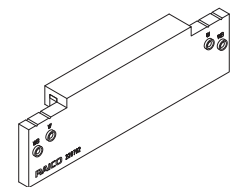
Article	No.	PU
Drill jig	228791	1 pc(s)



■ **Technical information**

- Can be used with the following profiles:
- Corner connections FRAME⁺ 75 FF: 210900.

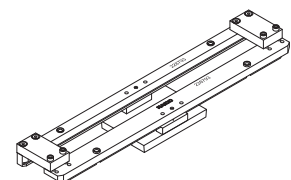
Article	No.	PU
Drill jig for header profile	228792	1 pc(s)



■ **Technical information**

- Can be used with the following profiles:
- FRAME⁺ 75 WI: 214504, 214506, 214508, 214512, 214519, 214520, 214530, 214554, 214556, 214558, 214562, 214568, 214570, 214572, 214576, 214644, 214646, 214004, 214006, 214008, 214012, 214054, 214056, 214058.
- FRAME⁺ 75 WB: 207504, 207506, 207556, 207562, 207568.
- FRAME⁺ 90 WI: 215301, 215302, 215303, 215304, 215305, 215306, 215311, 215312, 215313, 215314, 215315, 215316.

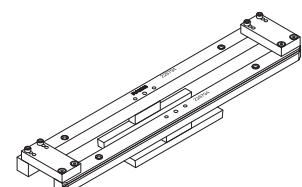
Article	No.	PU
Drill jig for outer frame	228793	1 pc(s)



■ **Technical information**

- For corner hinge joints.

Article	No.	PU
Drill jig for sash	228794	1 pc(s)

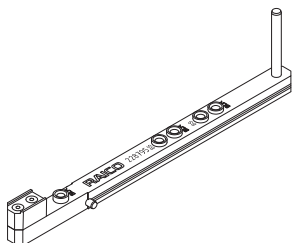


■ **Technical information**

- For corner hinge joints.

Drill jigs

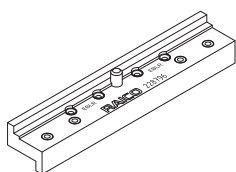
75 WI, 75 SF, 75 WB, 75 FF, 75 WA



Article	No.	PU
Drill jig	228795	1 pc(s)

■ **Technical information**

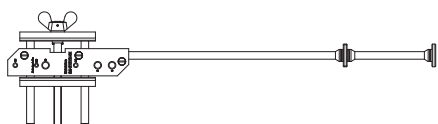
- For FRAME⁺ 75 WI.
- For the fixation of the barrier-free threshold.



Article	No.	PU
Drill jig outer shell with integration outer frame	228796	1 pc(s)

■ **Technical information**

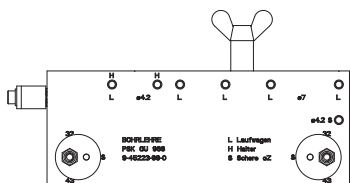
- For FRAME⁺ 75 WI.
- For the fixation of the barrier-free threshold (angle bracket for outer frame).



Article	No.	PU
Drill jig for cylinder gear - Parallel slide and tilt door with forced control	228832	1 pc(s)

■ **Technical information**

- Can be used with the following profiles:
- FRAME⁺ 75 WI: 214305, 214307, 214805, 214807.
- FRAME⁺ 75 SF: 214830, 214831.
- FRAME⁺ 90 WI: 215341, 215342.



Article	No.	PU
Drill template for track carriage and carrier - parallel slide and tilt door	228833	1 pc(s)

■ **Technical information**

- Can be used with the following profiles:
- FRAME⁺ 75 WI: 214305, 214307, 214805, 214807.
- FRAME⁺ 75 SF: 214830, 214831.
- FRAME⁺ 90 WI: 215341, 215342.



Article	No.	PU
Drill jig for corner angle and friction stay - parallel slide and tilt door with forced control	228834	1 pc(s)

■ **Technical information**

- Can be used with the following profiles:
- FRAME⁺ 75 WI: 214305, 214307, 214805, 214807.
- FRAME⁺ 75 SF: 214830, 214831.
- FRAME⁺ 90 WI: 215341, 215342.

Drill jigs

75 WI, 75 SF, 75 WB, 75 FF, 75 WA

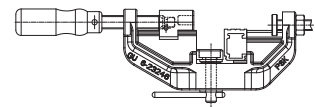
Article	No.	PU
Drill jig for guide and roller track - parallel slide and tilt door	228835	1 pc(s)



■ **Technical information**

- Can be used with the following profiles:
- FRAME⁺ 75 WI: 214305, 214307, 214805, 214807.
- FRAME⁺ 75 SF: 214830, 214831.
- FRAME⁺ 90 WI: 215341, 215342.

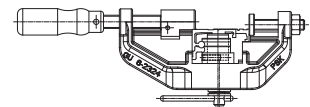
Article	No.	PU
Buffer jig for guide track - parallel slide and tilt door	228837	1 pc(s)



■ **Technical information**

- Can be used with the following profiles:
- FRAME⁺ 75 WI: 214305, 214307, 214805, 214807.
- FRAME⁺ 75 SF: 214830, 214831.
- FRAME⁺ 90 WI: 215341, 215342.

Article	No.	PU
Buffer jig for roller track - parallel slide and tilt door	228838	1 pc(s)



■ **Technical information**

- Can be used with the following profiles:
- FRAME⁺ 75 WI: 214305, 214307, 214805, 214807.
- FRAME⁺ 75 SF: 214830, 214831.
- FRAME⁺ 90 WI: 215341, 215342.

Sawing and milling jigs

75 WI, 75 SF, 75 WB, 75 FF, 75 WA



Article	Material	Surface	No.	PU
Sawing and milling jig	plastic material	white	228325	2 pc(s)

■ Technical information

- Can be used with the following profiles:
- FRAME+ 75 FF: 214902, 214922.
- FRAME+ 75 WB: 214902, 214922.



Article	Material	Surface	No.	PU
Sawing and milling jig	plastic material	white	228326	2 pc(s)

■ Technical information

- Can be used with the following profiles:
- FRAME+ 75 FF: 214904, 214924.
- FRAME+ 75 WB: 214904, 214924.



Article	Material	Surface	No.	PU
Sawing and milling jig	plastic material	white	228328	2 pc(s)

■ Technical information

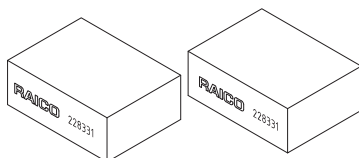
- Can be used with the following profiles:
- FRAME+ 75 FF: 214906, 214926.
- FRAME+ 75 WB: 214906, 214926.



Article	Material	Surface	No.	PU
Sawing and milling jig	plastic material	white	228329	2 pc(s)

■ Technical information

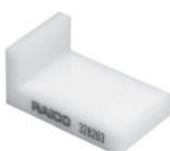
- Can be used with the following profiles:
- FRAME+ 75 FF: 214908, 214928.
- FRAME+ 75 WB: 214908, 214928.



Article	Material	Surface	No.	PU
Sawing and milling jig	plastic material	white	228331	2 pc(s)

■ Technical information

- Can be used with the following profiles:
- FRAME+ 75 FF: 214910.
- FRAME+ 75 WB: 214910.



Article	Material	Surface	No.	PU
Sawing and milling jig	plastic material	white	228560	2 pc(s)

■ Technical information

- Can be used with the following profiles:
- FRAME+ 75 WA: 217010, 217012.

Sawing and milling jigs
75 WI, 75 SF, 75 WB, 75 FF, 75 WA

Article	Material	Surface	No.	PU
Sawing and milling jig	plastic material	white	228561	2 pc(s)



■ **Technical information**

- Can be used with the following profiles:
- FRAME⁺ 75 WA: 217011, 217013.

Article	Material	Surface	No.	PU
Sawing and milling jig	plastic material	white	228562	2 pc(s)



■ **Technical information**

- Can be used with the following profiles:
- FRAME⁺ 75 WA: 217015.

Article	Material	Surface	No.	PU
Sawing and milling jig	plastic material	white	228563	2 pc(s)



■ **Technical information**

- Can be used with the following profiles:
- FRAME⁺ 75 WA: 217020.

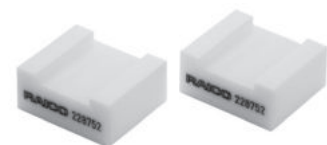
Article	Material	Surface	No.	PU
Sawing and milling jig	plastic material	white	228564	2 pc(s)



■ **Technical information**

- Can be used with the following profiles:
- FRAME⁺ 75 WA: 217021.

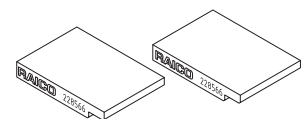
Article	Material	Surface	No.	PU
Sawing and milling jig	plastic material	white	228565	2 pc(s)



■ **Technical information**

- Can be used with the following profiles:
- FRAME⁺ 75 WA: 217015, 217020, 217021.

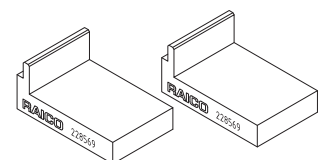
Article	Material	Surface	No.	PU
Sawing and milling jig	plastic material	white	228566	2 pc(s)



■ **Technical information**

- Can be used with the following profiles:
- FRAME⁺ 75 WA: 217035, 217036.

Article	Material	Surface	No.	PU
Sawing and milling jig	plastic material	white	228569	2 pc(s)

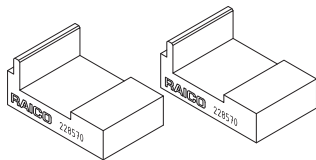


■ **Technical information**

- Can be used with the following profiles:
- FRAME⁺ 75 WA: 217035.

Sawing and milling jigs

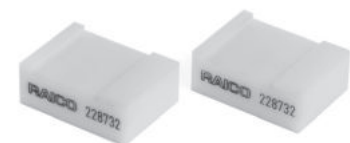
75 WI, 75 SF, 75 WB, 75 FF, 75 WA



Article	Material	Surface	No.	PU
Sawing and milling jig	plastic material	white	228570	2 pc(s)

■ Technical information

- Can be used with the following profiles:
- FRAME⁺ 75 WA: 217036.



Article	Material	Surface	No.	PU
Sawing and milling jig	plastic material	white	228732	2 pc(s)

■ Technical information

- Can be used with the following profiles:
- FRAME⁺ 75 WI: 214900.



Article	Material	Surface	No.	PU
Sawing and milling jig	plastic material	white	228733	2 pc(s)

■ Technical information

- Can be used with the following profiles:
- FRAME⁺ 75 WI: 214803, 214805, 214807, 214810, 214812.



Article	Material	Surface	No.	PU
Sawing and milling jig	plastic material	white	228735	2 pc(s)

■ Technical information

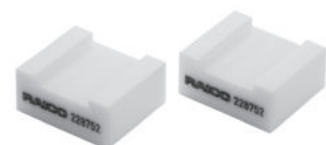
- Can be used with the following profiles:
- FRAME⁺ 75 WI: 214814.
- FRAME⁺ 75 DI: 321351.



Article	Material	Surface	No.	PU
Sawing and milling jig sash	plastic material	white	228736	2 pc(s)

■ Technical information

- Can be used with th following profiles:
- FRAME⁺ 75 LF: 210452.



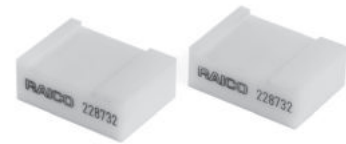
Article	Material	Surface	No.	PU
Sawing and milling jig	plastic material	white	228737	2 pc(s)

■ Technical information

- Can be used with the following profiles:
- FRAME⁺ 75 LF: 210450.

Sawing and milling jigs
75 WI, 75 SF, 75 WB, 75 FF, 75 WA

Article	Material	Surface	No.	PU
Sawing and milling jig	plastic material	white	228738	2 pc(s)



■ **Technical information**

- Can be used with the following profiles:
- FRAME⁺ 75 WI: 210458.

Article	Material	Surface	No.	PU
Sawing and milling jig	plastic material	white	228740	2 pc(s)



■ **Technical information**

- Can be used with the following profiles:
- FRAME⁺ 75 FF: 210506, 210510, 210700, 210721, 210726, 210800, 210806.

Article	Material	Surface	No.	PU
Sawing and milling jig	plastic material	white	228741	2 pc(s)



■ **Technical information**

- Can be used with the following profiles:
- FRAME⁺ 75 FF: 210622.

Article	Material	Surface	No.	PU
Sawing and milling jig	plastic material	white	228742	2 pc(s)



■ **Technical information**

- Can be used with the following profiles:
- FRAME⁺ 75 FF: 210624.

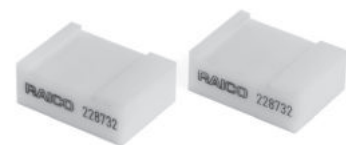
Article	Material	Surface	No.	PU
Sawing and milling jig	plastic material	white	228746	2 pc(s)



■ **Technical information**

- Can be used with the following profiles:
- FRAME⁺ 75 WI: 214803, 214805, 214807, 214810, 214812.

Article	Material	Surface	No.	PU
Sawing and milling jig	plastic material	white	228748	2 pc(s)

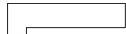


■ **Technical information**

- Can be used with the following profiles:
- FRAME⁺ 75 FF: 210900.

Sawing and milling jigs

75 WI, 75 SF, 75 WB, 75 FF, 75 WA



Article	Material	Surface	No.	PU
Sawing and milling jig	plastic material	white	228761	2 pc(s)

■ **Technical information**

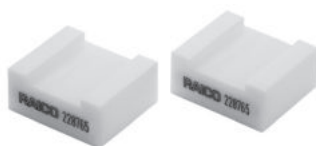
- Can be used with the following profiles:
- For FRAME⁺ 75 SF: 218560, 218561.



Article	Material	Surface	No.	PU
Sawing and milling jig	plastic material	white	228762	2 pc(s)

■ **Technical information**

- Can be used with the following profiles:
- FRAME⁺ 75 SF: 214830, 214831.



Article	Material	Surface	No.	PU
Sawing and milling jig	plastic material	white	228765	2 pc(s)

■ **Technical information**

- Can be used with the following profiles:
- FRAME⁺ 75 LF: 210460.



Article	Material	Surface	No.	PU
Sawing and milling jig	plastic material	white	228768	2 pc(s)

■ **Technical information**

- Can be used with the following profiles:
- FRAME⁺ 75 SF: 214830.



Article	Material	Surface	No.	PU
Sawing and milling jig	plastic material	white	228769	2 pc(s)

■ **Technical information**

- Can be used with the following profiles:
- FRAME⁺ 75 SF: 214831.



Article	Material	Surface	No.	PU
Sawing and milling jig	plastic material	white	228770	2 pc(s)

■ **Technical information**

- Can be used with the following profiles:
- FRAME⁺ 75 WB: 207504, 207506, 207556, 207562, 207568, 207604, 207606.

Sawing and milling jigs
75 WI, 75 SF, 75 WB, 75 FF, 75 WA

Article	Material	Surface	No.	PU
Sawing and milling jig	plastic material	white	228771	2 pc(s)



■ **Technical information**

- Can be used with the following profiles:
- FRAME⁺ 75 WB: 214876.
- FRAME⁺ 75 FF: 214876.

Article	Material	Surface	No.	PU
Sawing and milling jig	plastic material	white	228772	2 pc(s)



■ **Technical information**

- Can be used with the following profiles:
- FRAME⁺ 75 WB: 214877.
- FRAME⁺ 75 FF: 214877.

Article	Material	Surface	No.	PU
Sawing and milling jig	plastic material	white	228773	2 pc(s)



■ **Technical information**

- Can be used with the following profiles:
- FRAME⁺ 75 WB: 214937.
- FRAME⁺ 75 FF: 214937.

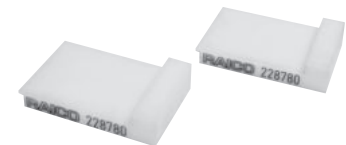
Article	Material	Surface	No.	PU
Sawing and milling jig dummy mullion sash	plastic material	white	228774	2 pc(s)



■ **Technical information**

- Can be used with the following profiles:
- FRAME⁺ 75 WB: 214902, 214904.
- FRAME⁺ 75 FF: 214906, 214908.

Article	Material	Surface	No.	PU
Sawing and milling jig dummy mullion sash	plastic material	white	228780	2 pc(s)



■ **Technical information**

- Can be used with the following profiles:
- FRAME⁺ 75 WB: 214922, 214924.
- FRAME⁺ 75 FF: 214926, 214928.

Sawing and milling jigs

75 WI, 75 SF, 75 WB, 75 FF, 75 WA



Article	Material	Surface	No.	PU
Sawing and milling jig	plastic material	white	229033	2 pc(s)

■ Technical information

- Can be used with the following profiles:
- FRAME⁺ 75 LF: 210450.



Article	Material	Surface	No.	PU
Sawing and milling jig	plastic material	white	229034	2 pc(s)

■ Technical information

- Can be used with the following profile:
- FRAME⁺ 75 WI: 214666, 214670.
- FRAME⁺ 75 WB: 207666, 207670.
- FRAME⁺ 75 WA: 217010, 217011, 217012, 217013.



Article	Material	Surface	No.	PU
Sawing and milling jig	plastic material	RAL 9010	229036	2 pc(s)

■ Technical information

- Can be used with the following profiles:
- FRAME⁺ 75 WB: 207667.



Article	Material	Surface	No.	PU
Sawing and milling jig	plastic material	white	328206	2 pc(s)

■ Technical information

- Can be used with the following profiles:
- FRAME⁺ 75 WI: 214504, 214506, 214508, 214512, 214519, 214520, 214530, 214554, 214556, 214558, 214562, 214568, 214570, 214572, 214576, 214602, 214606, 214644, 214646, 214692, 214694, 214702, 214004, 214006, 214008, 214012, 214054, 214056, 214058.
- FRAME⁺ 75 DI: 214520, 214530, 314000, 314002, 314008, 314010, 314200, 314206, 314207, 314208, 314210, 321011, 314050, 314060, 314250, 314260, 314150, 314381, 314151, 314384, 314160, 314382, 314161, 314385.



Article	Material	Surface	No.	PU
Sawing and milling jig	plastic material	white	328207	2 pc(s)

■ Technical information

- Can be used with the following profiles:
- FRAME⁺ 75 WI: 214818.
- FRAME⁺ 75 DI: 214818, 214822, 214828, 314100, 314108, 314112, 314506, 314508, 314550, 314380, 314399, 314387, 314391, 314390.

Tools in general

75 WI, 75 SF, 75 WB, 75 FF, 75 WA

Article	Material	Surface	No.	PU
Tool box empty	plastic material	black	085101	1 pc(s)



Article	Material	Surface	No.	PU
Pneumatic gun	-	-	228200	1 pc(s)

■ **Technical information**

- For double cartridges no. 227147 and 227148.



Article	Material	Surface	No.	PU
Hand held squeeze gun	-	-	014021	1 pc(s)

■ **Technical information**

- For the connection of no. 014015 for tubular bags 600 ml.



Article	Material	Surface	No.	PU
Gasket friction stay 90°	-	-	015005	1 pc(s)

■ **Technical information**

- For cutting gaskets up to 56 mm width.



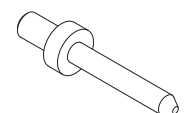
Article	Material	Surface	No.	PU
Mitre friction stay	-	-	229005	1 pc(s)



Article	Material	Surface	No.	PU
Nailing mandrill for machines (with slanted machine attachment)	-	-	228039	1 pc(s)

■ **Technical information**

- For stainless steel nails Ø 3, no. 230600, 230601 or 230602.



Article	Material	Surface	No.	PU
Nailing mandrill	-	-	228040	1 pc(s)

■ **Technical information**

- For hammering in the aluminium nails.

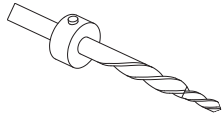


Tools in general

75 WI, 75 SF, 75 WB, 75 FF, 75 WA



Article	Material	Surface	No.	PU
Mechanical riveting pin	-	-	228044	1 pc(s)



Article	Material	Surface	No.	PU
Level drill for sash bar	-	-	228789	1 pc(s)